

MARAZZI USA

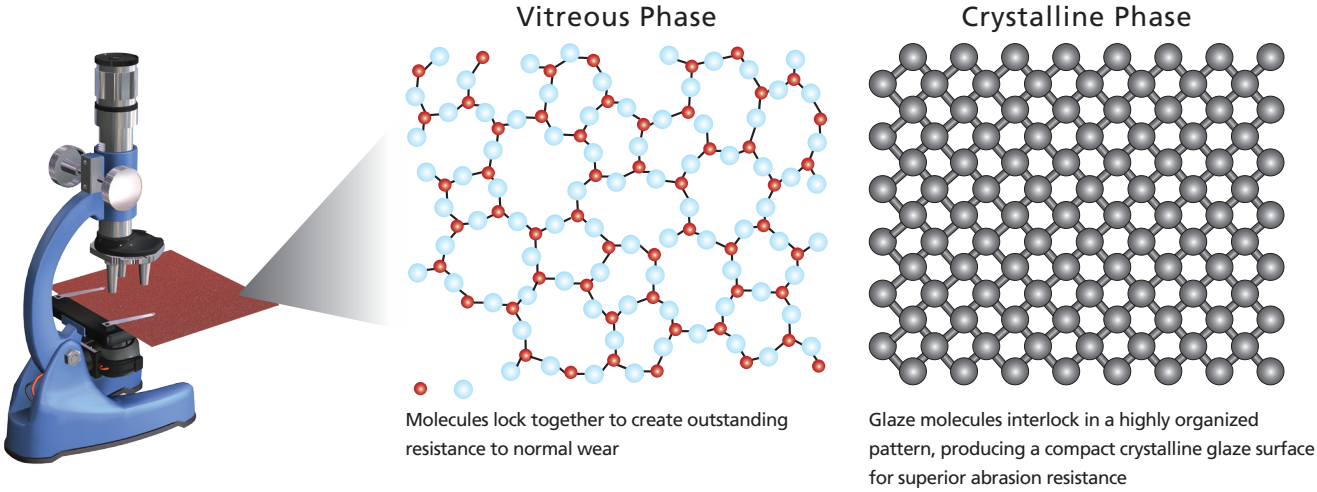
S 6020 Y70R
S 1060 Y20R
S 05 Y50R
S 7005 Y20R
S 1502 G
S 9000 N
S 4020 Y60R
S 2040 Y40R
S 6502 B
S 2502 B
S 4000 H
S 4000 G
S 3000 Y0R
S 2020 Y20R
S 2005 Y20R
S 7020 H0R
S 1005 Y10R
S 2570 Y50R



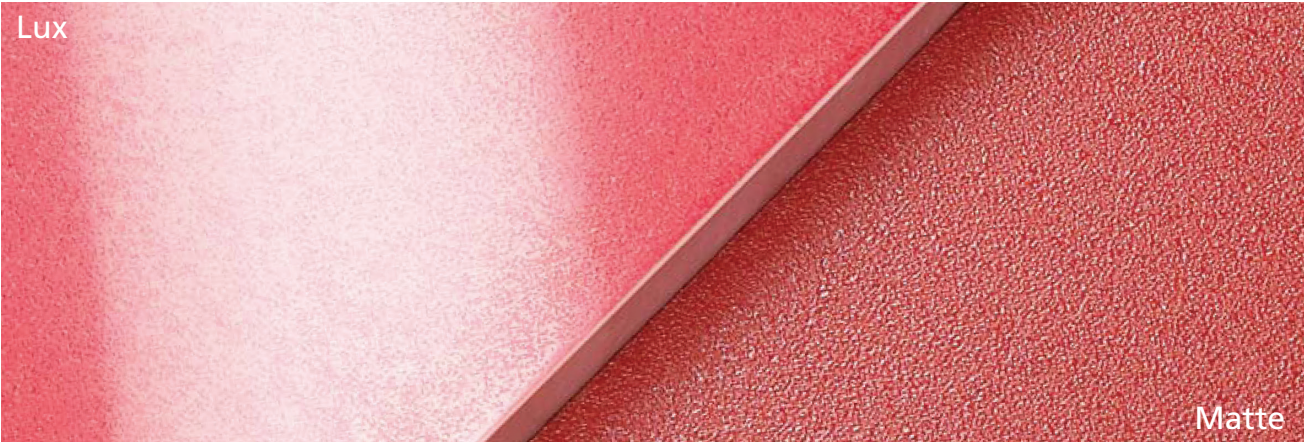
SistemA

crystallized porcelain stoneware | Rectified

SistemA Patent Pending Process



A highly technical product which uses a truly revolutionary technology, combined with high-performance raw materials. The process produces a highly-compacted crystalline glaze surface creating a color palette of rich and vibrant colors, making SistemA unparalleled in the tile industry.



Benefits

- **Extremely high deep abrasion resistance**

The crystalline process further increases the durability of SistemaA by enhancing the vitreous phase for perfect uniformity. This patent pending process results in a superior product with extremely high breaking strength and deep abrasion resistance.

- **Easy to clean**

- **Excellent slip resistance**

ADA-recognized COF (wet and dry)

- **Large rectified and modular format**

- **Full, Brilliant colors**

Leading-edge technology produces a highly-compacted crystalline glaze surface that reduces the index of refraction so light striking the tile face is unimpeded and reflects the brilliant glaze colors. Rich and vibrant shades ranging from cool to warm to intense provide a palette for every setting - residential or urban, indoors or out.

- **18+1 Custom Colors**

Ability to make custom color

- **45% Minimum pre-consumer recycle content**

Contributes to LEED credits and is an excellent choice for exterior facades.



SistemA Color Range

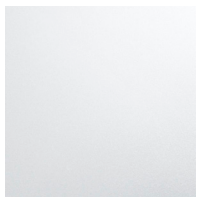
18+1A On demand.

Full and brilliant colors that go beyond fashion and style, assuring durability and high deep abrasion over time. Leading-edge technology produces a highly compacted crystalline glaze surface that reduces the index of refraction so light striking the tile face is unimpeded and reflects the brilliant glaze colors. Rich and vibrant shades ranging from cool to warm to intense provide a palette for every setting — residential or urban, indoors and out. The chromatic balance within SistemA offers exceptional coordination and modularity possibilities. The expansive array of colors, textures and sizes unite with frost resistance, exceptional abrasive wear, chemical resistance and ease of maintenance in this ground-breaking crystallized porcelain.

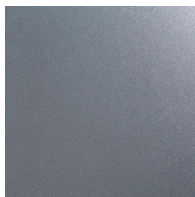


Cool / Neutral cold shades. In the spotlight, absolute black and white.
Various shades for grey are also present

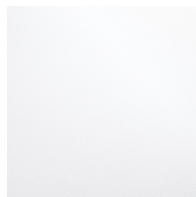
SistemA Acciaio



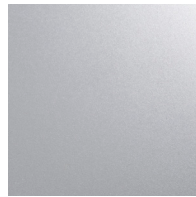
SistemA Ardesia



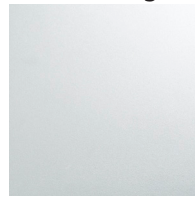
SistemA Bianco



SistemA Cemento



SistemA Grigio

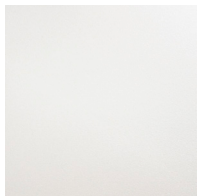


SistemA Nero

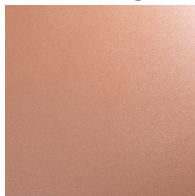


Warm / Neutral warm shades. In the spotlight, "transversal shades"
which widen the horizons for coordination

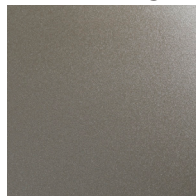
SistemA Avorio



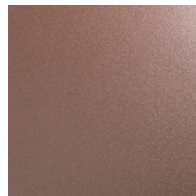
SistemA Argilla



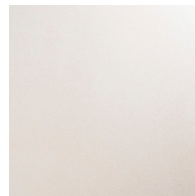
SistemA Fango



SistemA Marrone



SistemA Sabbia



SistemA Tortora

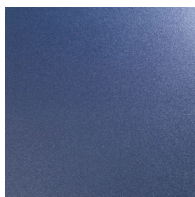


Intense / Medium and high saturated bright shades.
In the spotlight, bright red

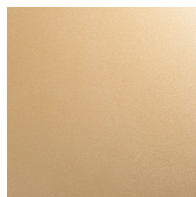
SistemA Arancio



SistemA Blu



SistemA Creta



SistemA Giallo



SistemA Rosso

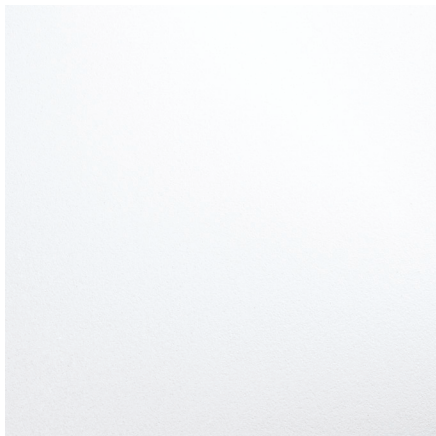


SistemA Verde

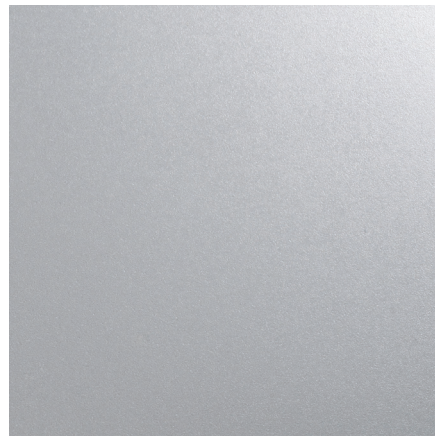




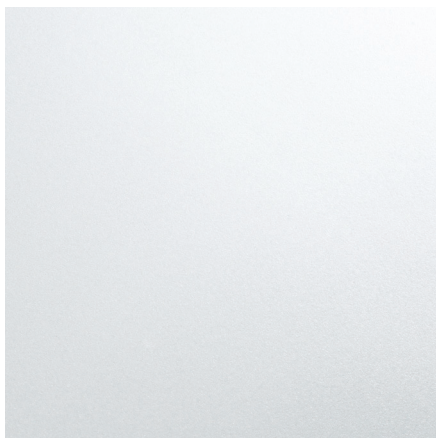




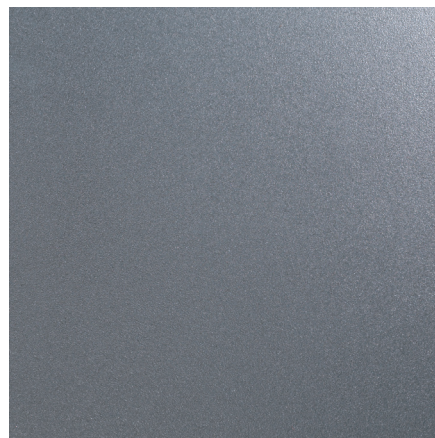
M6M0 A_Bianco Matte
24"x48"
M6K7 A_Bianco Matte
24"x24"
M6LV A_Bianco Lux
24"x24"
M6MF A_Bianco Matte
12"x24"
Rectified



M6M2 A_Cemento Matte
24"x48"
M6K9 A_Cemento Matte
24"x24"
M6LX A_Cemento Lux
24"x24"
M6MH A_Cemento Matte
12"x24"
Rectified



M6M1 A_Acciaio Matte
24"x48"
M6K8 A_Acciaio Matte
24"x24"
M6LW A_Acciaio Lux
24"x24"
M6MG A_Acciaio Matte
12"x24"
Rectified



M6M4 A_Ardesia* Matte
24"x48"
M6LC A_Ardesia* Matte
24"x24"
M6LZ A_Ardesia* Lux
24"x24"
M6MK A_Ardesia* Matte
12"x24"
Rectified

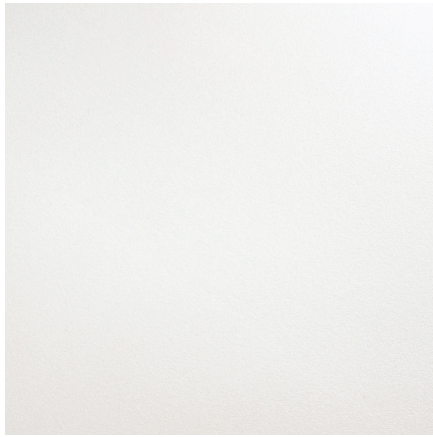


M6M3 A_Grigio Matte
24"x48"
M6LA A_Grigio Matte
24"x24"
M6LY A_Grigio Lux
24"x24"
M6MJ A_Grigio Matte
12"x24"
Rectified



M6M5 A_Nero* Matte
24"x48"
M6LD A_Nero* Matte
24"x24"
M6LO A_Nero* Lux
24"x24"
M6ML A_Nero* Matte
12"x24"
Rectified

Warm Shades



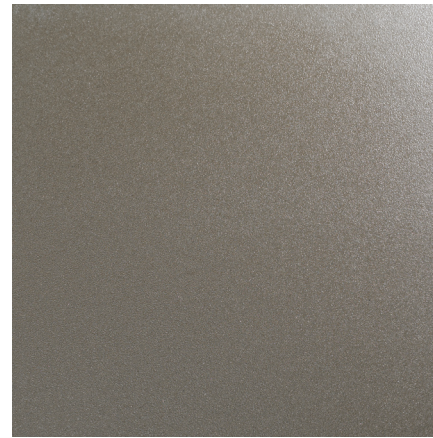
M6M6 A_Avorio Matte
24"x48"
M6LE A_Avorio Matte
24"x24"
M6L1 A_Avorio Lux
24"x24"
M6MMA A_Avorio Matte
12"x24"
Rectified



M6M9 A_Argilla Matte
24"x48"
M6LH A_Argilla Matte
24"x24"
M6L4 A_Argilla Lux
24"x24"
M6MQ A_Argilla Matte
12"x24"
Rectified



M6M7 A_Sabbia Matte
24"x48"
M6LF A_Sabbia Matte
24"x24"
M6L2 A_Sabbia Lux
24"x24"
M6MN A_Sabbia Matte
12"x24"
Rectified



M6NA A_Fango* Matte
24"x48"
M6LJ A_Fango* Matte
24"x24"
M6L5 A_Fango* Lux
24"x24"
M6MR A_Fango* Matte
12"x24"
Rectified



M6M8 A_Tortora Matte
24"x48"
M6LG A_Tortora Matte
24"x24"
M6L3 A_Tortora Lux
24"x24"
M6MP A_Tortora Matte
12"x24"
Rectified



M6NC A_Marrone Matte
24"x48"
M6LK A_Marrone Matte
24"x24"
M6L6 A_Marrone Lux
24"x24"
M6MT A_Marrone Matte
12"x24"
Rectified

*In the darker shades, the color is enhanced and made more luminous by the inclusion of shiny elements in the glaze.



M6ND A_Creta Matte
24"x48"
M6LL A_Creta Matte
24"x24"
M6L8 A_Creta Lux
24"x24"
M6MU A_Creta Matte
12"x24"
Rectified



M6NH A_Giallo Matte
24"x48"
M6LQ A_Giallo Matte
24"x24"
M6MD A_Giallo Lux
24"x24"
M6MY A_Giallo Matte
12"x24"
Rectified



M6NE A_Verde Matte
24"x48"
M6LM A_Verde Matte
24"x24"
M6L9 A_Verde Lux
24"x24"
M6MV A_Verde Matte
12"x24"
Rectified



M6NJ A_Arancio Matte
24"x48"
M6LR A_Arancio Matte
24"x24"
M6ME A_Arancio Lux
24"x24"
M6MZ A_Arancio Matte
12"x24"
Rectified
















M6NG A_Blu* Matte
24"x48"
M6LP A_Blu* Matte
24"x24"
M6MC A_Blu* Lux
24"x24"
M6MX A_Blu* Matte
12"x24"
Rectified



M6NF A_Rosso Matte
24"x48"
M6LN A_Rosso Matte
24"x24"
M6MA A_Rosso Lux
24"x24"
M6MW A_Rosso Matte
12"x24"
Rectified

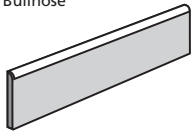
SystemA

CRYSTALLIZED PORCELAIN STONEWARE | RECTIFIED


-  Floor Tile
-  Wall Tile
-  Modular Tile
-  Rectified Tile
-  Trim Available
-  Suitable for Outdoors
-  V4 Substantial Variation
-  Frost Resistant
-  Meets ADA Recommendations
-  IV Abrasion Resistance
-  06 C.O.F.(Wet)
-  07 C.O.F.(Dry)
-  45% Minimum Pre-Consumer Recycled Content


Trims

Bullnose



- M6NY A_Bianco
- M6NZ A_Acciaio
- M6N1 A_Grigio
- M6N0 A_Cemento
- M6N2 A_Ardesia*
- M6N3 A_Nero*
- M6NR A_Avorio
- M6NT A_Sabbia
- M6NU A_Tortora
- M6NV A_Argilla
- M6NW A_Fango*
- M6NX A_Marrone
- M6NK A_Creta
- M6NL A_Verde
- M6NM A_Rosso
- M6NN A_Blu*
- M6NP A_Giallo
- M6NQ A_Arancio
- Bullnose
3"x24"

	Sizes	Pcs	Sq. Ft.	Weight (lbs.)	Thickness
Modular Tile	12" x 24"	5	9.69	22.75	0.433
Modular Tile	24" x 24"	4	15.50	35.00	0.433
Modular Tile	24" x 48"	2	15.50	3.00	0.433
Bullnose	3" x 24"	13		10	Compatible

	Sizes	Ctn	Sq. Ft.	Weight (lbs.)
Modular Tile	12" x 24"	48	465.02	2352
Modular Tile	24" x 24"	30	465.00	2352
Modular Tile	24" x 48"	30	465.00	1080

ASTM Test Results

Technical Characteristics	ASTM Standards	ASTM Test Results Polished	ASTM Test Results Matte	ASTM Test Methods
Water Absorption	≤0.50%	≤ 0.50%	≤ 0.50%	C 373
Frost Resistance	As Reported	Resistant	Resistant	C 1026
Scratch Resistance	MOHS 1-10	6	8	MOHS Scale
Breaking Strength	≥ 250 lbf.	≥ 1144 lbf.	≥ 1176 lbf.	C 648
Facial Dimension	-3.0% < Nominal ≤ 2.0%	Within Standard	Within Standard	C 499
Nominal Thickness	≤ 0.04 in (1.02 mm max)	Within Standard	Within Standard	C 499
Wedging (squareness)	≤ 0.25% or +/- 0.8mm**	Within Standard	Within Standard	C 502
Warpage Edge (flatness)	≤ 0.40% or +/- 1.8mm**	Within Standard	Within Standard	C 485
Abrasion Resistance	Class 0 - Class V	Class IV*	Class IV*	C 1027
Dry Coefficient of Friction	As Reported	0.70 ≤ C.O.F. < 0.80	0.80 ≤ C.O.F. < 0.90	C 1028
Wet Coefficient of Friction	As Reported	0.60 ≤ C.O.F. < 0.70	0.60 ≤ C.O.F. < 0.70	C 1028
Chemical Resistance	Class A - Class E	Class A	Class A	C 650
Stain Resistance	Class A - Class E	Class B	Class A	C 1378

*In the darker shades, the color is enhanced and made more luminous by the inclusion of shiny elements in the glaze.



American Marazzi Tile, Inc.
Headquarters & Manufacturing Plant

Telephone
972.226.0110
Fax
972.226.5629

359 Clay Road
Sunnyvale, Texas 75182

www.marazzitile.com
contact@marazzitile.com

SistemA is available nationwide.
To locate your nearest Distributor call
American Marazzi Tile Customer Service
or visit www.marazzitile.com

DISTRIBUTED BY:

Color and other aesthetic features shown are as close as the limitation of the printing process will allow. We have tried to make this brochure as comprehensive and factual as possible. We reserve the right, however, to make changes at any time, without notice, in colors, materials, packaging, specifications and availability. Since some information may have been updated since time of printing, please check with American Marazzi Tile Customer Service for details.